



The Score

A Quarterly Update on Adagio Accounting



Volume 6 Issue 4

DataCare 8.1 A minds your data

If you are running multiple Adagio modules, or working with multiple company data sets, Adagio DataCare will provide peace of mind and ensure the integrity of your accounting data. DataCare provides both a File Integrity Check for all modules, and Application Integrity Check for all core modules.

Set up Adagio DataCare once, and let it work its magic every night while your accounting staff are at home. It opens and reads all your accounting data files, validates the information in the files, and creates a log of the work performed. Tell DataCare to run a job at a specific time, and leave it running on your desktop, or

DataCare will automatically send you an e-mail on success or failure of the integrity check. You can even have the job log transmitted as part of the e-mail too.

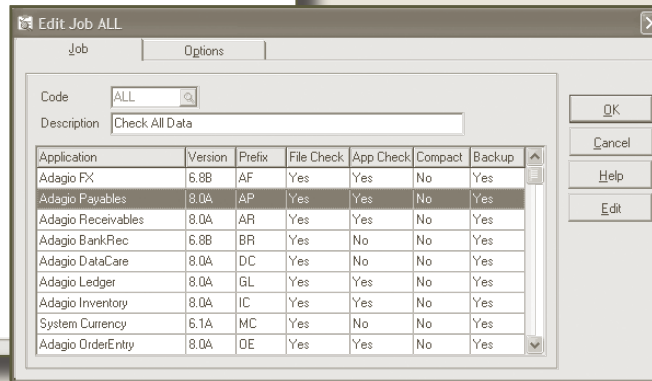
The peace of mind DataCare provides is now greater than ever! Version 8.1A boasts the following new features:

- Compatible with Windows Vista and Adagio Lanpaks V8.1A or higher. All Adagio downloads are now signed with a Verisign digital certificate, and Help files are now "CHM" format and installed on the local workstation to work under Vista.
- Screen displays have been made easier to read, with the font changed to Tahoma and disabled text displayed in blue.

FX wins Sleeter Award again!

For the third year in a row, Adagio FX has been awarded the Sleeter Group's Awesome QuickBooks Add-On award. They say "This financial statement design and presentation tool is truly awesome. Unlike most generic reporting writing tools, Adagio FX "understands" how financial statements should be formatted, plus it allows accountants to customize reports in just about any way imaginable."

Version 8.1B is now compatible with QuickBooks 2008, Microsoft Office Accounting Professional 2007 and 2008, Simply Accounting 2008, and Adagio Ledger 9.0.



let the Windows Scheduler automatically launch DataCare and execute the checking you need overnight.

Create DataCare jobs, identifying which modules to check, and what to do on success or failure. Automatically create backups, and copies of backups on alternative machines on your network, or integrate with WebSafe for secure, offsite backups, protecting you from hard disk failure. DataCare will automatically keep as many backup sets as you desire, and remove obsolete backups automatically.

Use DataCare to automatically compact your accounting data, freeing up space from records marked for deletion. Smaller files mean faster backups, faster day ends and posting and an overall performance improvement.

- WebSafe integration under File | Backup allows secure, offsite, automatic backup of your accounting data to the web, as frequently as each time a backup is made. DataCare jobs can be configured to backup to WebSafe and scheduled to run after hours. Full details about WebSafe can be found at www.websafe.com.

- The speed of the Data Integrity Check has been significantly improved when data is on a network drive. The File Integrity Check phase performance is up to ten times faster.

The peace of mind DataCare provides is invaluable. If you don't have DataCare installed, call us today to set up an appointment. You'll be glad you did. 🎵

Brought to you by...

Business Computer Centre
MAKING COMPUTER TECHNOLOGY WORK FOR YOU

7527 Julliard Place
Prince George, BC Canada
V2N 2Y7

Tel (250) 964-3131
Fax (250) 964-3141
E-mail ralph@bccentre.bc.ca
Web www.bccentre.bc.ca

Minimizing Check Voiding

If your company regularly pays a large number of vendor invoices with a single payment, and would like to avoid wasting check forms with 'VOID', you can do this by creating a check spec that doesn't print details in the advice. You then can print an additional form formatted as 'advice only' which lists the paid invoices.

How do you set this up?

1. Take a check spec that has the sections 'Check', 'Advice 1 Header', 'Advice 1 Detail', and 'Advice 1 footer'.
2. Delete all fields that exist in the Advice detail section.
3. Drag the 'Advice 1 detail' section bar down and drop it immediately above the 'Advice 1 footer' section bar. Choose 'No' to the question of moving any fields with the section.
4. The intention of moving the detail section is to make its section height = 0, while still maintaining the overall Advice length. You may need to do some minor 'tidying' with vertical lines and Advice header section height.
5. Add a label with the text 'See attached form for payment details' (or something similar) and place it in the Advice Header section where details would typically have been listed.
6. From the File/Specification Options, edit the Title to differentiate this as a new check spec.
7. Also edit the 'Max Details' to a large number, larger than the number of invoices you would ever pay on a single check. The absolute maximum is about 32000, but performance is affected with such a large number—somewhere around 100-500 is more appropriate.
8. Set the sections to print as necessary, selecting 'Advice 1' to print for both advices if there are 2 for your form.
9. If you haven't already, save this spec with a new file name, so you don't overwrite an existing spec.

Note: Additionally, you can create a 'check only' specification the full 7" or 11", and layout the form exactly as it will print, including the advice information.

When you print checks that use these forms, you will only get one check form printing for each check.

After indicating that check forms printed correctly, you will get a message asking if Additional Forms should be printed—choose Yes. Then from the print screen that follows, select the spec that prints Advice information only. A sample spec AP\$ADFRM.SAM can be copied from sample data to your company if you wish—update the file extension (.SAM) to match your data, and edit to include your company information.

Make sure your AP bank code is defined to print Additional Forms. Check the specifications screen and ensure the 'bypass additional forms' checkbox is not selected.

Setting up a "Start List"

Question: We have three separate companies/databases. Right now we have one shortcut to each module. I understand how to set up access to the separate databases at the login screen, but I would like to make choosing the individual company database as easy and foolproof as possible. How is this done? Being long time ACCPAC Plus users, we are used to the "Start List"

Answer: You can set up desktop icons for each module/data set using the Adagio command line parameters to specify the database (folder and extension) and even the user and password. The parameters are:

- /u Allows you to set a default user
- /p Allows you to set a default password
- /d Allows you to set a default data path
- /e Allows you to set a default data extension

See the Fundamentals documentation for more details. 🎵

Tightly Integrated Shipping

Do you wish your accounting was integrated with your shipping company? Look no further! LinXship does just that.

LinXship is a carrier management tool fully integrated to Adagio and major carrier service companies to manage the workflow of shipments, including shipping cost (rates), bills of lading, shipping manifests and a tracking facility. LinXship supports UPS Worldship/Connect, FedEx/FedEx Ground, DHL EasyShip (in development) and many LTL carriers.

Transferring shipment information to the carrier system eliminates double entry, speeds up the order process, and can provide better customer service through e-mail tracking and shipping information.

Visit www.linsoft.com for more details.